

GOODYEAR®

EfficientGrip PERFORMANCE



SILENCE THE ROAD, NOT YOUR SINGING.

GOODYEAR'S QUIETEST LUXURY TYRE.

with QuietTred Technology



Low
Noise



Superior
Comfort



Wet
Performance



** Only available at participating Goodyear Autocare Centres. Terms & conditions apply.

GOODYEAR

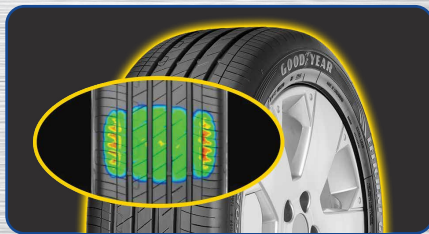
EfficientGrip PERFORMANCE

GOODYEAR'S QUIETEST LUXURY TYRE.



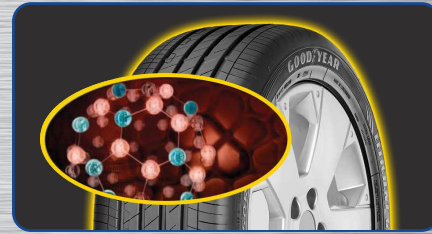
LOW NOISE
NOISE DAMPENING TREAD DESIGN

Closed groove design limits the air captured in between treads, minimising noise while on the move, while the closed shoulder prevents radial noise sound waves from radiating, reducing perceived exterior and interior noise levels.



SUPERIOR COMFORT
OPTIMISED CONSTRUCTION TO
REDUCE VIBRATIONS

An optimised tyre footprint distributes pressure evenly to reduce vibration and irregular wear, while the increased insulation in the tyre structure results in better damping and less vibrations for a more comfortable journey.



WET PERFORMANCE
HIGH GRIP TREAD COMPOUND

High loaded silica composites feature an optimised polymer blend that gives more grip and lowers braking distance in the wet.

AVAILABLE SIZES:

Size	Car Fitments
225 / 55 R16 95W	Mercedes, BMW Old Models
215 / 50 R17 95W	Ford Focus, Honda Civic, Proton Inspira
225 / 45 R17 94Y	Peugeot 308, Hyundai Elantra, Volkswagen Golf & Jetta, Hyundai Ioniq
245 / 45 R17 95W	Audi A4
225 / 50 R17 98W XL	Peugeot 3008, Honda Accord, Proton Perdana
225 / 55 R17 101W XL	Mazda 6, Audi A6, BMW 5-Series, Subaru Forester, Subaru XV, Toyota RAV4
235 / 65 R17 104H	Honda CR-V 2.0 , KIA Sorento, Volvo XC60 2.0 T5 Drive-E, Land Rover Freelander 2.2 SD4 S, Land Rover Freelander 2.0 Si4 S
225 / 45 R18 95W XL	Honda Civic, Honda Stream, KIA Optima, Mazda 6, Mazda RX-8, Subaru Legacy, Subaru Levrog, Volvo V50, PSA DS4 (Rof), BMW 3-Series, BMW 4-Series, BMW Z4
245 / 45 R18 100Y XL	Audi A6 Hybrid
245 / 50 R18 100W	Mercedes S300
255 / 40 R18 99W XL	BMW 3 Series (Rear)
255 / 45 R18 99Y	Audi A6